



**Bundeswehr Sozialwerk**  
Hilfe und Erholung



# **ΤΙΜΟΚΑΤΑΛΟΓΟΣ**

**01.05.2025 – 04.01.2026**

---

**ΥΠΗΡΕΣΙΑ ΠΑΡΑΘΕΡΙΣΜΟΥ ΠΡΟΣΩΠΙΚΟΥ ΕΝΟΠΛΩΝ  
ΔΥΝΑΜΕΩΝ - CLIMS**

---

**mail: [hndgs.clims@gmail.com](mailto:hndgs.clims@gmail.com)**

**Τηλ.: 210657 5272 - 2167 - 5267 - 4036**

---

	<b>Page</b>
<b>Remarks</b> on individual travel	<b>3</b>
<b>Haus Norderoog</b> - Norderney - Germany	<b>4</b>
<b>Haus Seeburg</b> - Groemitz - Germany	<b>5</b>
<b>Haus am Suedstrand</b> - Goehren - Germany	<b>6</b>
<b>Haus am Werlsee</b> - Gruenheide - Germany	<b>7</b>
<b>Apartments Maerkische Heide</b> - Gruenheide - Germany	<b>8</b>
<b>Hotel Lindenhof</b> - Brauneberg - Germany	<b>9</b>
<b>Haus Wiesenthal</b> - Oberwiesenthal - Germany	<b>10</b>
<b>Hotel Edelweiss</b> - Garmisch-Partenkirchen - Germany	<b>11</b>
<b>Hotel Kroessenbacherhof</b> - Bruck - Austria	<b>12</b>
<b>Hotel Alpenschloessl</b> - Mayrhofen - Austria	<b>13</b>
<b>Hotel 360 Grad</b> - Merano - Italy	<b>14</b>
<b>Piccola Italia Resort</b> - Tremosine - Italy	<b>15</b>

## Remarks on individual travel

---

- We need the **CLIMS-application** form for every booking.

- **Children's discounts**

up to 2 years	100 %
from 2 to 6 years	75 %
from 7 to 11 years	50 %
from 12 to 17 years	25 %

The age of the child on the day of arrival is decisive for determining the child discount.

- **Cancellation fees**

until 30 days prior to arrival:	no cancellations fees
29 to 1 day prior to arrival:	30% of booking costs
on date of arrival or no-show:	100% of booking costs

These cancellation fees will be applied by common cancellation reasons except the following:

- Death of the applicant, spouse, child or parents,
- Hospital stay (only with medical certificate) of the applicant, spouse or child,
- Military deployment (with certification).

- **Rebooking**

In the event of mutual changes to the contract at the request of the customer, a **rebooking fee of 20,- €** will be charged.

- **Pets**

- Some selected accommodations are provided for **taking ONE dog**.
- Otherwise, **pets are not allowed** in BwSW holiday resorts.



- **Payment**

- Cash payments as well as payments by debit card are possible at the hotel.
- Belgium, France – annual accounts

- **Arrival**

- Arrival is possible between 15:00 and 18:00.
- For arrivals after 18:00, please inform the holiday resort by telephone.

## Haus Norderoog • Norderney • North Sea

Gorch-Fock-Weg 20, 26548 Norderney, Germany

Haus Norderoog is located on the outskirts of the village, a two-minute walk from the ferry pier. It is a 15-minute walk to the centre (1 km). The beach is located in the immediate Proximity (300 m).

### Facilities

Hotel with 56 rooms, bar, children's playroom (with football table, billiard table & Xbox), playground in the garden (with climbing frame, swing, seesaw, table tennis table football goals), terrace, parking, Wi-Fi in public areas

**For a fee:** washing machine, dryer

**Half board** with breakfast/dinner buffet

### Accommodation

All rooms are equipped with shower, WC, hairdryer, safe, TV, Wi-Fi

#### SR cl./single room classic

- single bed, partly 1 chair-bed or additional 1 baby bed, max. 1 person + 1 child up to 17 y. or 1 child up to 2 y.

#### DR cl./double room classic

- double bed or two single beds, partly additional 1 baby bed, max. 2 persons + 1 child up to 2 y.
- Two rooms are barrier-free.

#### FR/family room

- double bed, 2 chair-beds, max. 2 persons + 2 children up to 17 y.
- double bed, single bed or chair-bed, partly additional 1 baby bed, max. 3 persons + 1 child up to 2 y.
- 3 single beds, max. 3 persons

### Additional inclusive services – P3

In the event of failure of individual services, replacement will be provided.

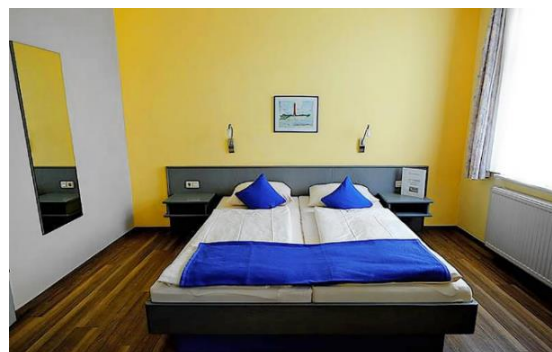
- Festive New Year´s Eve buffet with New Year´s Eve party
- New Year´s brunch
- Coffee & Cake on arrival day
- Games evening
- Guided city tour, visit to the bathing museum

### Arrival/Departure

- **Arrival:** Monday – Saturday, **Departure:** daily
- **Arrival within the period from 28.06.-06.09.2025:** Thursday/Saturday, minimum stay of 5 nights
- **P3** – fixed booking period\*

### Prices per person – half board

	per period	per overnight
	P3: 26.12.25 – 04.01.26*	15.06.25 – 13.09.25
SR cl.	<b>1.045 €</b>	<b>88 €</b>
DR cl.	<b>943 €</b>	<b>79 €</b>
FR	<b>1.147 €</b> (from 3 pers. 1.057 €)	<b>98 €</b> (from 3 pers. 88 €)
<b>Extra costs:</b> Tourist tax is charged on site. Use of DR cl. as SR: 20 €/night. Use of FR as SR: 25 €/night.		



<https://www.bundeswehr-sozialwerk.de/reiseangebot/unterkuenfte/haus-norderoog/>

## Haus Seeburg • Groemitz • Schleswig-Holstein • Baltic Sea

Haffkamp 7, 23743 Groemitz, Germany

Haus Seeburg is situated very close to the beach (50 m) and just a few minutes' walk from the spa park and yacht harbour.

### Facilities

Hotel with 33 rooms, bistro, children's playroom and winter garden, parking, Wi-Fi in public areas

**For a fee:** washing machine, dryer

**Half board** with breakfast/dinner buffet

### Accommodation

All rooms are equipped with shower, WC, hairdryer, TV, Wi-Fi

#### SR cl./single room classic

- single bed, partly 1 chair-bed, max. 1 person + 1 child up to 17 y.

#### SR co./single room comfort

- single bed, partly 1 chair-bed, nice view, partly additional 1 baby bed, max. 1 person + 1 child up to 17 y.

#### DR cl./double room classic

- double bed, low ground or land side, max. 2 persons + 1 child up to 2 y.

#### DR co./double room comfort

- double bed, partly 1 chair-bed, partly additional 1 baby bed, partly balcony, nice view, max. 2 persons + 1 child up to 17 y + 1 child up to 2 y..
- One room is barrier-free.

#### FR/family room

- 1 bedroom with double bed, 1 bedroom with bunk bed or single bed, max. 3 persons + 1 children up to 17 y.

### Additional inclusive services – P3

In the event of failure of individual services, replacement will be provided.

- Welcome with mulled wine and biscuits
- New Year's Eve gala buffet
- New Year's Eve party with music and midnight snack
- New Year's breakfast with sparkling wine

### Arrival/Departure

- **Arrival:** Monday – Saturday, **Departure:** daily
- **Arrival within the period from 28.06.-06.09.2025:** Thursday/Saturday, minimum stay of 5 nights
- **P3** - fixed booking period\*

### Prices per person – half board

	per period	per overnight
	P3: 26.12.25 – 03.01.26*	15.06.25 – 13.09.25
SR cl.	<b>1.004 €</b>	<b>79 €</b>
SR co.	<b>1.122 €</b>	<b>89 €</b>
DR cl.	<b>886 €</b>	<b>69 €</b>
DR co.	<b>1.122 €</b> (from 3 pers. 1.042 €)	<b>89 €</b> (from 3 pers. 79 €)
FR	<b>1.122 €</b> (from 3 pers. 1.042 €)	<b>89 €</b> (from 3 pers. 79 €)

**Extra costs:** Tourist tax is charged on site. Use of DR cl./com. as SR: 20 €/night. Use of FR as SR: 25 €/night.



<https://www.bundeswehr-sozialwerk.de/reiseangebot/unterkuenfte/haus-seeburg-und-ferienwohnung-groemitz/>

## Haus am Suedstrand • Goehren • Ruegen • Baltic Sea

Thiessower Strasse 18/19, 18586 Goehren/Ruegen, Germany

The house is located on the outskirts of Goehren on the south beach. You can reach the town centre in 5 minutes and the beach promenade on the north beach in 15 minutes on foot.

### Facilities

Hotel with 65 rooms, bar, lift, children´s playroom, bowling alley, table tennis, billiard table, small fitness area, boules court, large sun terrace, children´s playground, parking spaces, Wi-Fi in public areas, e-bike charging station, bicycle storage

**For a fee:** washing machine, dryer

**Half board** with breakfast buffet/dinner

### Accommodation

All rooms are equipped with shower, WC, hairdryer and TV.

#### SR co./single room comfort

- single bed, partly additional 1 baby bed, partly sea side, max. 1 person + 1 child up to 2 y.

#### DR cl./double room classic

- double bed, max. 2 persons

#### DR co./double room comfort

- double bed, partly balcony, nice view, max. 2 persons

#### JS/Juniorsuite

- bedroom with double bed and sofa bed, max. 2 persons + 2 children up to 17 y.

#### FR/family room

- bedroom with double bed and sofa bed or bunk bed, partly additional 1 baby bed, max. 2 persons + 2 children up to 17 y. + 1 child up to 2 y.

### Additional inclusive services – P3

In the event of failure of individual services, replacement will be provided.

- Welcome drink
- Grilled sausage + pastry
- Twilight stroll
- Mulled wine gathering
- Folk Choir Sellin
- Dance evening with live music
- New Year´s Eve gala with live music, dinner and sparkling wine at midnight, New Year´s brunch
- Ride on the "Rasender Roland"

### Arrival/Departure

- **Arrival:** Monday – Saturday, **Departure:** daily
- **Arrival within the period from 28.06.-06.09.2025:** Thursday/Saturday, minimum stay of 5 nights
- **P3** - fixed booking period\*

### Prices per person – half board

	per period	per overnight
	P3: 26.12.25 – 03.01.26*	15.06.25 – 13.09.25
SR co.	<b>846 €</b>	<b>79 €</b>
DR cl.	<b>732 €</b>	<b>68 €</b>
DR co.	<b>846 €</b>	<b>79 €</b>
JS	<b>846 €</b> (from 3 pers. 766 €)	<b>79 €</b> (from 3 pers. 69 €)
FR	<b>846 €</b> (from 3 pers. 766 €)	<b>79 €</b> (from 3 pers. 69 €)

**Extra costs:** Tourist tax is charged on site. Use of DR cl./co. as SR: 20 €/night. Use of FR as SR: 25 €/night.



<https://www.bundeswehr-sozialwerk.de/reiseangebot/unterkuenfte/haus-norderoog/>

## Haus am Werlsee • Gruenheide • near Berlin

Walther-Rathenau-Strasse 20, 15537 Gruenheide, Germany

Haus am Werlsee is located directly on the lake on a spacious property. With the regional express from Erkner, you can reach the centre of Berlin within 30 minutes.

### Facilities

Hotel with 44 rooms, bar, lift, table tennis, children's corner, sauna, spacious outdoor area, sunbathing lawn, own jetty, playground, Wi-Fi

**For a fee:** washing machine, dryer

**Half board** with breakfast buffet/dinner

Free use of bicycles, canoes, rowing boats, pedal boat, stand-up paddle, sauna (within opening hours).

### Accommodation

All rooms are equipped with shower, WC, hairdryer, safe, balcony, TV, parking space and Wi-Fi.

#### DR co./double room comfort

- double bed, lake view, balcony, max. 2 persons
- one room is barrier-free

#### JS/junior suite

- combined living room and bedroom with double bed and sofa bed, partly additional 1 baby bed, additional bathtub, lake view, balcony, max. 2 persons + 2 children up to 17 years + 1 child up to 2 years.

#### FR/family room

- 2 identical bedrooms with double bed, lake view, balcony, low barrier, connecting door, only bookable for 3-4 persons.

### Additional inclusive services – P3

In the event of failure of individual services, replacement will be provided.

- Welcome drink
- Midnight sparkling wine and snack
- Brunch on New Year's Eve
- New Year's Eve Hike
- New Year's Eve celebration with program

### Arrival/Departure

- **Arrival:** Monday – Saturday, **Departure:** daily
- **Arrival within the period from 28.06.-06.09.2025:** Thursday/Saturday, minimum stay of 5 nights
- **P3** - fixed booking period\*

### Prices per person – half board

	per period	per overnight
	P3: 26.12.24 – 03.01.25*	15.06.25 – 13.09.25
DR co.	<b>759 €</b>	<b>60 €</b>
JS	<b>843 €</b> (from 3 pers. 763 €)	<b>68 €</b> (from 3 pers. 58 €)
FR	<b>679 €</b> (only bookable for 3-4 pers.)	<b>50 €</b> (only bookable for 3-4 pers.)
<b>Extra costs:</b> Use of DR co. as SR: 20 €/night. Use of JS/FR as SR: 25 €/night.		



<https://www.bundeswehr-sozialwerk.de/reiseangebot/unterkuenfte/haus-am-werlsee/>

## Apartments Maerkische Heide • Gruenheide • near Berlin

Walther-Rathenau-Strasse 20, 15537 Gruenheide, Germany

Apartments Maerkische Heide are located directly on the lake on a spacious property. With the regional express from Erkner, you can reach the centre of Berlin within 30 minutes by Regional-Express.

### Facilities

1 linen package (bed linen, towels) per person/satay, parking, Wi-Fi

**For a fee:** washing machine, dryer

**Self-catering** accommodation (Half board can be booked before arrival - during opening periods Haus am Werlsee)

### Accommodation

All apartments have kitchen, bathroom with shower, WC, hairdryer, TV, safe, parking spaces.



#### Apt. C/apartment C

- 3-room-apartment: optionally 2 additional baby beds, 1 bedroom with double bed, 1 bedroom with double bed and 1 single bed, living room, max. 5 persons + 2 children up to 2 y.
- One apartment is provided for taking ONE dog.

#### Apt. D/apartment D

- 3-room-aprtment: optionally 2 additional baby beds, 1 bedroom with double bed, 1 bedroom with double bed and 2 single beds, living room, max. 6 persons + 2 children up to 2 y.

### Arrival/Departure

- **Arrival:** Monday – Saturday, **Departure:** daily
- **Arrival within the period from 28.06.-06.09.2025:** Thursday/Saturday, minimum stay of 5 nights

### Prices per apartment

	per overnight		
	01.01.25 – 28.02.25 30.11.25 – 31.12.25	01.03.25 – 14.06.25 14.09.25 – 29.11.25	15.06.25 – 13.09.25
Apt. C	<b>48 €</b>	<b>64 €</b>	<b>80 €</b>
Apt. D	<b>54 €</b>	<b>72 €</b>	<b>90 €</b>

**Extra costs:** Final cleaning: Apt. C 75 €/stay, bringing a dog 115 €/stay. Apt. D 90 €/stay



<https://www.bundeswehr-sozialwerk.de/reiseangebot/unterkuenfte/ferienwohnungen-maerkische-heide/>



## Hotel Lindenhof • Brauneberg • Moselle

Lindenstrasse 5, 54472 Brauneberg, Germany

Idyllic and quiet in the district of Bernkastel-Wittlich, the Hotel Lindenhof is only a few minutes' walk away from the banks of the Moselle.

### Facilities

Hotel with 30 rooms, bar, lift, social/meeting room, terrace, zoo, bowling alley, bicycle and canoe rental, Wi-Fi, e-bike charging station, children's playground, parking, baby beds

**For a fee:** infrared cabin, massages can be booked in the house

**Half board** with breakfast buffet/dinner

### Accommodation

All rooms are equipped with shower, WC, hairdryer, TV and Wi-Fi.

#### SR/single room classic

- single bed, partly balcony, max. 1 person

#### DR cl./double room classic

- double bed, balcony, partly additional 1 baby bed, max. 2 persons + 1 child up to 2 y.
- One room has a low barrier.

#### DR co./double room comfort

- double bed, Moselle side, balcony, partly additional 1 baby bed, max. 2 persons + 1 child up to 2 y.
- One room has a low barrier.

#### FR/family room

- bedroom with double bed, separate living room with sofa bed, balcony, partly additional 2 baby beds, max. 2 persons + 2 children up to 17 yrs. + 2 children up to 2 y.

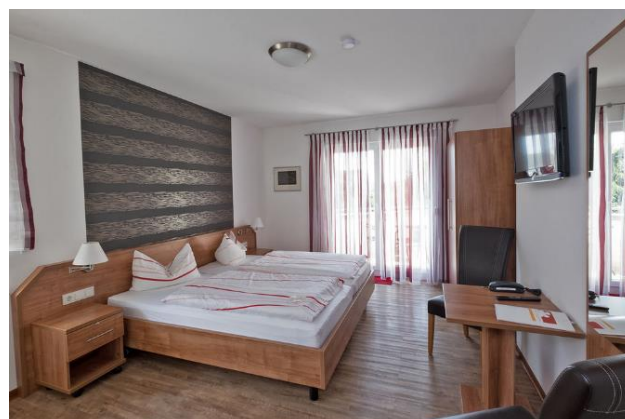
### Arrival/Departure

- **Arrival:** Monday – Saturday, **Departure:** daily
- **Arrival within the period from 28.06.-06.09.2025:** Thursday/Saturday, minimum stay of 5 nights

### Prices per person – half board

	per overnight	
	14.04.25 - 14.06.25 12.10.25 - 08.11.25	15.06.25 - 11.10.25
SR cl.	<b>55 €</b>	<b>66 €</b>
DR cl.	<b>48 €</b>	<b>58 €</b>
DR co.	<b>57 €</b>	<b>69 €</b>
FR	<b>62 €</b> (from 3 pers. starting at 52 €)	<b>75 €</b> (from 3 pers. 65 €)

**Extra costs:** Tourist tax is charged on site. Use of DR cl./co. as SR: 20 €/night. Use of FR as SR: 25 €/night.



<https://www.bundeswehr-sozialwerk.de/reiseangebot/unterkuenfte/hotel-lindenhof/>

# Haus Wiesenthal • Oberwiesenthal • Erzgebirge/Ore Mountains

Huettenbachstrasse 1, 09484 Oberwiesenthal, Germany

Haus Wiesenthal is centrally located in a quiet area and is the ideal starting point for cycling, hiking and winter sports. It is only a few minutes' walk from the chairlift, the cable car and the market square.

## Facilities

Hotel with 83 rooms, bar, lift, fitness room, 10.000 m<sup>2</sup> outdoor area, football field, playground, volleyball field, table tennis, children's playroom, youth room, sauna (within opening hours), Wi-Fi in public areas, parking

**For a fee:** solarium, bowling alley, billiards, washing machine, dryer

**Half board** with breakfast buffet/dinner

## Accommodation

All rooms are equipped with shower or bathtub, WC, hairdryer, TV, safe, Wi-Fi.

### SR cl./single room classic

- single bed, max. 1 person

### DR cl./double room classic

- double bed, max. 2 persons

### DR co./double room comfort

- double bed, partly sofa bed, partly balcony, max. 3 persons

### FR/family room

- combined living and bedroom with double bed and 2 single beds, partly additional 1 baby bed, balcony, max. 4 pers. + 1 child up to 2 y.

### JS/junior suite

- combined living and bedroom with double bed and sofa bed, partly additional 1 baby bed, balcony, low barrier, max. 2 pers. + 2 children up to 17 y. + 1 child up to 2 y.

### SU/suite

- bedroom with double bed and sofa bed or 2 single beds, living room partly with sofa bed, partly additional 2 baby beds, partly balcony, max. 3 persons + 2 children up to 17 y. + 2 children up to 2 y.
- One room is barrier-free with a disabled-friendly hospital bed.
- bedroom with double bed, bedroom with 2 single beds or sofa bed, partly additional 2 baby beds, max. 4 persons + 1 child up to 17 y. or 2 persons + 2 children up to 17 y. + 2 children up to 2 y.

## Additional inclusive services – P2/P3

In the event of failure of individual services, replacement will be provided.

- Welcome drink
- Torchlight hike with mulled wine

### Christmas (P2)

- Christmas dinner
- Dance evening

### New Year's Eve (P3)

- New Year's Eve buffet with dance evening
- New Year's brunch

## Arrival/Departure

- **Arrival:** Monday – Saturday, **Departure:** daily
- **Arrival within the period from 28.06.-06.09.2025:** Thursday/Saturday, minimum stay of 5 nights
- **P2/P3** – fixed booking period\*

## Prices per person – half board

	per period		per overnight
	P2: 20.12.25 – 27.12.25*	P3: 27.12.25 – 03.01.26*	15.06.25 – 13.09.25
SR classic	<b>592 €</b>	<b>725 €</b>	<b>54 €</b>
DR classic	<b>531 €</b>	<b>647 €</b>	<b>48 €</b>
DR comfort	<b>654 €</b> (from 3 pers. 584 €)	<b>802 €</b> (from 3 pers. 732 €)	<b>60 €</b> (from 3 pers. 50 €)
FR	<b>654 €</b> (from 3 pers. 584 €)	<b>802 €</b> (from 3 pers. 732 €)	<b>60 €</b> (from 3 pers. 50 €)
JS	<b>715 €</b> (from 3 pers. 645 €)	<b>880 €</b> (from 3 pers. 810 €)	<b>66 €</b> (from 3 pers. 56 €)
SU	<b>839 €</b> (from 3 pers. 769 €)	<b>1.035 €</b> (from 3 pers. 965 €)	<b>79 €</b> (from 3 pers. 69 €)
<b>Extra costs:</b> Tourist tax is charged on site. Use of FR/JS/SU as SR: 25 €/night.			



<https://www.bundeswehr-sozialwerk.de/reiseangebot/unterkuenfte/haus-wiesenthal/>

## Hotel Edelweiss • Garmisch-Partenkirchen • Bavaria

Martinswinkelstrasse 15-17, 82467 Garmisch-Partenkirchen, Germany

The comfortably furnished Hotel Edelweiss is quietly yet centrally located in Garmisch-Partenkirchen and is therefore the starting point for numerous hiking tours. In a few minutes' walk you can reach the town centre and the Michael Ende Kurpark.

### Facilities

Hotel with 21 individually furnished rooms, bar, bicycle cellar with e-bike charging station, terrace, underground parking, Wi-Fi

The hotel has a lovingly landscaped garden directly on the Partnach river.

**For a fee:** underground garage 5 €/night (no reservations possible)

### Breakfast

### Accommodation

All rooms are equipped with shower, WC, hairdryer, TV and Wi-Fi.

#### DR cl./double room classic

- double bed, partly additional 1 baby bed, partly balcony, max. 2 persons + 1 child up to 2 y.
- Partially provided for taking ONE dog.



#### DR co./double room comfort

- double bed, partly additional 1 baby bed, balcony, max. 2 persons and 1 child up to 2 y.

#### FR/family room

- 2 bedrooms with double bed, terrace, max. 2 persons + 2 children up to 17 y.
- The room is provided for taking ONE dog.

#### JS/junior suite

- combined living and bedroom with double bed, balcony, max. 2 persons
- combined living and bedroom with double bed and sofa bed, partly additional 1 baby bed, balcony, max. 2 persons + 2 children up to 17 y. + 1 child up to 2 y.

#### SU/suite

- 2 bedrooms with double bed, living room with sofa bed, additional 1 baby bed, balcony, max. 3 persons + 2 children up to 17 y. + 1 child up to 2 y.

### Arrival/Departure

- **Arrival:** Monday – Saturday, **Departure:** daily
- **Arrival within the period from 28.06.-06.09.2025:** Thursday/Saturday, minimum stay of 5 nights
- **on 24.12.2024 and on 31.12.2024:** no arrival

### Prices per persons - breakfast

	per overnight		
	15.06.25 – 13.09.25	20.12.25 – 26.12.25	27.12.25 – 03.01.26
DR cl.	<b>53 €</b>	<b>58 €</b>	<b>65 €</b>
DR co.	<b>70 €</b>	<b>77 €</b>	<b>86 €</b>
FR	<b>78 €</b> (from 3 pers. 68 €)	<b>86 €</b> (from 3 pers. 76 €)	<b>96 €</b> (from 3 pers. 86 €)
JS	<b>78 €</b> (from 3 pers. 68 €)	<b>86 €</b> (from 3 pers. 76 €)	<b>96 €</b> (from 3 pers. 86 €)
SU	<b>95 €</b> (from 3 pers. 85 €)	<b>104 €</b> (from 3 pers. 94 €)	<b>116 €</b> (from 3 pers. 106 €)

**Extra costs:** Tourist tax is charged on site (includes free use of local buses). Use of DR cl./co. as SR: 20 €/night. Use of JS/FR/SU as SR: 25 €/night. Surcharge for bringing a dog: 10 €/night.



## Hotel Kroessenbacherhof\*\*\*\* • Bruck • Land Salzburg • Austria

Kroessenbachstrasse 12, 5671 Bruck/Grossglockner, Austria

The 4-star hotel is located on the outskirts of Bruck, not far from Zell am See and Kaprun with its Kitzsteinhorn glacier.

### Facilities

Hotel with 35 rooms, bar, lift, children's playroom, Xbox room, table tennis room, sauna, lounge room, fireplace lounge, parking, Wi-Fi, e-bike charging station

**For a fee:** washing machine, dryer

**Half board** with breakfast buffet and dinner

### Accommodation

All rooms are equipped with shower, WC, hairdryer, TV, radio, Wi-Fi and safe

#### DR cl./double room classic

- double bed, roof terrace or balcony or loggia, max. 2 persons

#### DR co./double room comfort

- double bed, partly with sofa bed, balcony or roof terrace, max. 2 persons and 1 child up to 17 y.
- Two rooms have low barriers.

#### FR/family room

- 1 bedroom with double bed, 1 bedroom with 1 bunk bed, balcony, max. 2 persons and 2 children up to 17 y.

#### JS/junior suite

- combined living and sleeping area with double bed and sofa bed, partly additional 1 baby bed, balcony or roof terrace, max. 2 persons and 2 children up to 17 y. + 1 child up to 2 y.

#### SU/suite

- living room with sofa bed, 1 bedroom with double bed, 1 bedroom with two single beds, balcony, max. 4 persons and 2 children up to 17 y.

### Additional inclusive services – P2/P3

- reflective afternoon with Christmas cookies, mulled wine and punch on 24.12.2025
- festive menu on 25.12.2025
- New Year's Eve celebration with aperitif reception, 6-course gala menu, 1 glass of sparkling wine/person, midnight buffet

### Arrival/Departure

- **Arrival:** Monday – Saturday, **Departure:** daily
- **Arrival within the period from 28.06.-06.09.2025:** Thursday/Saturday, minimum stay of 5 nights
- **P2/P3** - fixed booking period\*

### Prices per person – half board

	per period		per overnight	
	P2 20.12.25 – 27.12.25*	P3 27.12.25 – 03.01.26*	15.06.25 – 13.09.25	14.05.25 – 14.06.25 14.09.25 – 11.10.25 13.12.25 – 19.12.25
DR classic	<b>565 €</b>	<b>866 €</b>	<b>62 €</b>	<b>55 €</b>
DR comfort	<b>625 €</b> (from 3 pers. 565 €)	<b>954 €</b> (from 3 pers. 884 €)	<b>69 €</b> (from 3 pers. 59 €)	<b>61 €</b> (from 3 pers. starting at 51 €)
FR	<b>625 €</b> (from 3 pers. 565 €)	<b>954 €</b> (from 3 pers. 884 €)	<b>69 €</b> (from 3 pers. 59 €)	<b>61 €</b> (from 3 pers. starting at 51 €)
JS	<b>684 €</b> (from 3 pers. 624 €)	<b>1.042 €</b> (from 3 pers. 972 €)	<b>76 €</b> (from 3 pers. 66 €)	<b>66 €</b> (from 3 pers. starting at 56 €)
SU	<b>803 €</b> (from 3 pers. 743 €)	<b>1.217 €</b> (from 3 pers. 1.147 €)	<b>89 €</b> (from 3 pers. 79 €)	<b>78 €</b> (from 3 pers. starting at 68 €)
<b>Extra costs:</b> Tourist tax is charged on site. Use of DR cl./co. as SR: 20 €/night. Use of FR/JS/SU as SR: 25 €/night.				



<https://www.bundeswehr-sozialwerk.de/reiseangebot/unterkuenfte/kroessenbacherhof/>

## Hotel Alpenschloessl • Mayrhofen • Ziller Valley • Austria

Tuxer Strasse 733, 6290 Mayrhofen, Austria

The Hotel Alpenschloessl is quietly but centrally located in Mayrhofen. The ski bus stop, Ahornbahn, Penkenbahn, restaurants, cafés and pubs are only a few minutes' walk away.

### Facilities

Hotel with 21 rooms, bar, terrace, lift, wellness area incl. sauna and relax room (use within opening hours), parking, Wi-Fi, e-bike charging station, snack bar (daily 6 PM to 8 PM)

### Breakfast

### Accommodation

All rooms are equipped with shower, WC, hairdryer, TV, radio and Wi-Fi.

#### SR/single room classic

- single bed, max. 1 person

#### DR cl./double room classic

- double bed, partly balcony, max. 2 persons

#### DR co./double room comfort

- double bed, partly additional 1 single bed, partly additional 1 baby bed, balcony or terrace, max. 2 persons + 1 child up to 17 y. + 1 child up to 2 y.

#### FR/family room

- 2 bedrooms with double bed, additional 1 sofa bed, max. 4 persons + 1 child up to 17 y.
- 1 bedroom with double bed, 1 bedroom with bunk bed, partly balcony, max. 4 persons + 1 child up to 17 y.

#### JS/junior suite

- combined living and sleeping area with double bed and sofa bed, partly addition 1 single bed, balcony or terrace, max. 4 persons + 1 child up to 17 y.

#### SU/suite

- 1 bedroom with double bed, living room with sofa bed, balcony, max. 4 persons

### Arrival/Departure

- **Arrival:** Monday – Saturday, **Departure:** daily
- **Arrival within the period from 28.06.-06.09.2025:** Thursday/Saturday, minimum stay of 5 nights
- **27.12.2025 – 04.01.2026:** fixed booking period\*

### Prices per persons – breakfast

	per overnight		
	30.03.25 – 14.06.25 14.09.25 – 19.10.25	04.01.25 – 29-03-25 15.06.25 – 13.09.25	27.12.25 – 04.01.26*
SR classic	<b>53 €</b>	<b>59 €</b>	<b>89 €</b>
DR classic	<b>48 €</b>	<b>51 €</b>	<b>76 €</b>
DR comfort	<b>61 €</b>	<b>67 €</b>	<b>101 €</b>
FR	<b>61 €</b> (from 3 pers. starting at 51 €)	<b>67 €</b> (from 3 pers. starting at 57 €)	<b>101 €</b> (from 3 pers. 91 €)
JS	<b>68 €</b> (from 3 pers. starting at 58 €)	<b>76 €</b> (from 3 pers. starting at 66 €)	<b>114 €</b> (from 3 pers. 104 €)
SU	<b>83 €</b> (from 3 pers. starting at 73 €)	<b>92 €</b> (from 3 pers. starting at 82 €)	<b>139 €</b> (from 3 pers. 129 €)
<b>Extra costs:</b> Tourist tax is charged on site. Use of DR cl./co. as SR: 20 €/night. Use of FR/JS/SU as SR: 25 €/night.			



<https://www.bundeswehr-sozialwerk.de/reiseangebot/unterkuenfte/hotel-alpenschloessl-und-ferienwohnung-mayrhofen/>

## Hotel 360 Grad • Merano • South Tyrol • Italy

Dantestrasse 110, 39019 Merano, Italy

The hotel is situated in a picturesque, quiet location on the outskirts of Merano and not far from Trauttmansdorff Castle. The unspoilt location offers a fantastic panoramic view of the Merano countryside. A bus stop is located in the immediate vicinity.

### Facilities

Hotel with 35 accommodation units, bar, roof terrace with panoramic view, outdoor brine pool, library, billiard room, trampoline, table tennis and nest swing, parking, Wi-Fi. Indoor and outdoor towels are provided at no additional cost.

**For a fee:** bathrobes on loan, underground garage 5 €/night

**Half board** with breakfast buffet and dinner

### Accommodation

All rooms are equipped with shower or bathtub, WC, hairdryer, TV, minibar, safe and Wi-Fi

#### SR cl./single room comfort

- single bed, balcony, max. 1 person

#### DR co./double room comfort

- double bed, partly additional 1 baby bed, partly balcony or terrace, max. 2 persons + 1 child up to 2 y.

#### FR/family room

- combined living and sleeping area with double bed and sofa bed, partly additional 2 baby beds, balcony, max. 4 persons + 2 children up to 2 y.

#### JS/junior suite

- double bed, partly additional 2 baby beds, balcony, max. 2 persons + 2 children up to 2 y.
- combined living and sleeping area with double bed and sofa bed, partly additional 1 baby bed, balcony, low barrier, max. 4 persons + 1 child up to 2 y.

#### SU/suite

- 1 bedroom with double bed, 1 living room with sofa bed and partly with second sofa bed, partly additional 2 baby beds, partly low barrier, partly additional balcony, bathroom with shower and/or bathtub, max. 4 persons + 1 child up to 17 y. + 2 child up to 2 y.

### Arrival/Departure

- **Arrival:** Monday – Saturday, **Departure:** daily
- **Arrival within the period from 28.06.-06.09.2025:** Thursday/Saturday, minimum stay of 5 nights

#### Price per person – half board

	per overnight	per overnight
	15.03.25 – 14.06.25 14.09.25 – 08.11.25	15.06.25 – 13.09.25
SR co.	<b>71 €</b>	<b>78 €</b>
DR co.	<b>79 €</b>	<b>87 €</b>
FR	<b>79 €</b> (from 3 pers. starting at 69 €)	<b>87€</b> (from 3 pers. 77 €)
JS	<b>86 €</b> (from 3 pers. starting at 76 €)	<b>96 €</b> (from 3 pers. 86 €)
SU	<b>102 €</b> (from 3 pers. starting at 92 €)	<b>113 €</b> (from 3 pers. 103 €)

**Extra costs:** Tourist tax is charged on site. Use of DR co. as SR: 20 €/night. Use of FR/JS/SU as SR: 25 €/night.



<https://www.bundeswehr-sozialwerk.de/reiseangebot/unterkuenfte/360-grad-und-ferienwohnungen-meran/>

## Piccola Italia Resort • Tremosine • Lake Garda • Italy

Via Mezzema 1, 25010 Tremosine sul Garda, Italy

The Piccola Italia Resort is located in the middle of the fantastically beautiful Alto Garda Nature Park, with its mountains and plateaus above the western side of Lake Garda. The municipality of Tremosine nestles in the mountains at an altitude of up to 800 metres. Restaurants, bars, shops can be found in the idyllic mountain village of Pieve, 500 metres away. Lake Garda is 6 km away and the beach is 15 km away.

### Facilities

Terraced resort with 35 accommodation units, outdoor pool, terrace with sun loungers and parasols, children's pool, table tennis, parking, Wi-Fi, e-bike charging station and outdoor fitness equipment

**For a fee:** linen package 15 €/person/stay

**Self-catering accommodation (no meals) in apartments and bungalows**



### Accommodation

All apartments/bungalows have bathroom with shower or bathtub, WC, hairdryer, kitchenette, balcony or terrace, lake view, TV, safe, fan/heating, Wi-Fi.

#### Apt. B/apartment B

- 2-room-apartment: 1 bedroom with double bed, 1 living room, additional 1 baby bed, balcony, kitchenette, max. 2 persons + 1 child up to 2 y.
- Two apartments are provided for taking ONE dog.

#### Apt. C/apartment C

- 2-room-apartment: 1 bedroom with double bed and whirlpool, 1 living room with sofa bed, additional 2 baby beds, kitchenette, balcony, max. 4 persons + 2 children up to 2 y.

#### Apt. D/apartment D

- 3-room-apartment: 2 bedrooms with double bed, 1 living room with sofa bed for 2 persons, additional 2 baby beds, balcony, kitchenette, max. 6 persons + 2 children up to 2 y.

#### BU/bungalow

- 3-room-bungalow: 2 bedrooms with double bed, 1 living room, additional 2 baby beds, terrace, kitchenette, max. 4 persons + 2 children up to 2 y.
- Two bungalow have low barriers.
- Two bungalows are provided for taking ONE dog.

### Arrival/Departure

- **Arrival:** Monday – Saturday, **Departure:** daily
- **Arrival within the period from 28.06.-06.09.2025:** Thursday/Saturday, minimum stay of 5 nights

### Prices per apartment or bungalow

	<b>per overnight</b> 05.04.25 – 14.06.25 14.09.25 – 01.11.25	<b>per overnight</b> 15.06.25 – 13.09.25
Apt. B	<b>66 €</b>	<b>82 €</b>
Apt. C	<b>91 €</b>	<b>112 €</b>
Apt. D	<b>97 €</b>	<b>120 €</b>
BU	<b>85 €</b>	<b>104 €</b>

**Extra costs:** Tourist tax is charged on site. Final cleaning: Apt. B 65 €/stay, Apt. C + Bungalows 75 €/stay, Apt. D 90 €/stay. Surcharge for bringing a dog: 50 €/stay



<https://www.bundeswehr-sozialwerk.de/reiseangebot/unterkuenfte/piccola-italia-resort>



**Bundeswehr Sozialwerk**  
Hilfe und Erholung