



Bundeswehr Sozialwerk
Hilfe und Erholung



ΤΙΜΟΚΑΤΑΛΟΓΟΣ

21.12.2024 – 30.04.2025

**ΥΠΗΡΕΣΙΑ ΠΑΡΑΘΕΡΙΣΜΟΥ ΠΡΟΣΩΠΙΚΟΥ ΕΝΟΠΛΩΝ
ΔΥΝΑΜΕΩΝ - CLIMS**

mail: hndgs.clims@gmail.com

Τηλ.: 210657 5272 - 2167 - 5267 - 4036

	Page
Remarks on individual travel	3
Haus Norderoog - Norderney – Germany	4
Haus Seeburg – Groemitz – Germany	5
Haus am Suedstrand – Goehren – Germany	6
Haus am Werlsee – Gruenheide – Germany	7
Apartments Maerkische Heide – Gruenheide – Germany	8
Hotel Lindenhof – Brauneberg – Germany	9
Haus Wiesenthal – Oberwiesenthal – Germany	10
Hotel Edelweiss – Garmisch-Partenkirchen – Germany	11
Hotel Kroessenbacherhof – Bruck – Austria	12
Hotel Alpenschloessl – Mayrhofen – Austria	13
Hotel 360 Grad – Merano – Italy	14
Piccola Italia Resort – Tremosine – Italy	15

Remarks on individual travel

- We need the **CLIMS-application** form for every booking.

- **Children's discounts**

up to 2 years	100 %
from 2 to 6 years	75 %
from 7 to 11 years	50 %
from 12 to 17 years	25 %

The age of the child on the day of arrival is decisive for determining the child discount.

- **Cancellation fees**

until 30 days prior to arrival:	no cancellations fees
29 to 1 day prior to arrival:	30% of booking costs
on date of arrival or no-show:	100% of booking costs

These cancellation fees will be applied by common cancellation reasons except the following:

- Death of the applicant, spouse, child or parents,
- Hospital stay (only with medical certificate) of the applicant, spouse or child,
- Military deployment (with certification).

- **Rebooking**

In the event of mutual changes to the contract at the request of the customer, a **rebooking fee of 20,- €** will be charged.

- **Pets**

- Some selected accommodations are provided for **taking ONE dog**.
- Otherwise, **pets are not allowed** in BwSW holiday resorts.



- **Payment**

- Credit, debit cards and cash are accepted, payment directly at the hotel.
- Belgium, France – annual accounts

- **Arrival**

- Arrival is possible between 15:00 and 18:00.
- For arrivals after 18:00, please inform the holiday resort by telephone.

Haus Norderoog • Norderney • North Sea

Gorch-Fock-Weg 20, 26548 Norderney, Germany

Haus Norderoog is located on the outskirts of the village, a two-minute walk from the ferry pier. It is a 15-minute walk to the centre (1 km). The beach is located in the immediate Proximity (300 m).

Facilities

Hotel with 56 rooms, bar, children's playroom (with football table, billiard table & Xbox), playground in the garden (with climbing frame, swing, seesaw, table tennis table football goals), terrace, parking, Wi-Fi in public areas

For a fee: washing machine, dryer

Half board with breakfast/dinner buffet

Accommodation

All rooms are equipped with shower, WC, hairdryer, safe, TV, Wi-Fi

SR cl./single room classic

- single bed, partly 1 chair-bed or additional 1 baby bed, max. 1 person + 1 child up to 17 y. or 1 child up to 2 y.

DR cl./double room classic

- double bed or two single beds, partly additional 1 baby bed, max. 2 persons + 1 child up to 2 y.
- Two rooms are barrier-free.

FR/family room

- double bed, 2 chair-beds, max. 2 persons + 2 children up to 17 y.
- double bed, single bed or chair-bed, partly additional 1 baby bed, max. 3 persons + 1 child up to 2 y.
- 3 single beds, max. 3 persons

Additional inclusive services – P3

In the event of failure of individual services, replacement will be provided.

- Festive New Year´s Eve buffet with New Year´s Eve party
- New Year´s brunch
- Coffee & Cake on arrival day
- Games evening
- Guided city tour, visit to the bathing museum

Arrival/Departure

- **Arrival:** Monday – Saturday, **Departure:** daily
- **P3** – fixed booking period*

Prices per person – half board

	per period	per overnight
	P3: 25.12.24 – 04.01.25*	01.03.25 – 30.04.25
SR cl.	1.038 €	71 €
DR cl.	928 €	63 €
FR	1.148 € (from 3 pers. 1.038 €)	78 € (from 3 pers. 73 €)

Extra costs: Tourist tax is charged on site. Use of DR cl. as SR: 15 €/night. Use of FR as SR: 20 €/night.



<https://www.bundeswehr-sozialwerk.de/reiseangebot/unterkuenfte/haus-norderoog/>

Haus Seeburg • Groemitz • Schleswig-Holstein • Baltic Sea

Haffkamp 7, 23743 Groemitz, Germany

Haus Seeburg is situated very close to the beach (50 m) and just a few minutes' walk from the spa park and yacht harbour.

Facilities

Hotel with 33 rooms, bistro, children's playroom and winter garden, parking, Wi-Fi in public areas

For a fee: washing machine, dryer

Half board with breakfast/dinner buffet

Accommodation

All rooms are equipped with shower, WC, hairdryer, TV, Wi-Fi

SR cl./single room classic

- single bed, partly 1 chair-bed, max. 1 person + 1 child up to 17 y.

SR co./single room comfort

- single bed, partly 1 chair-bed, sea side, max. 1 person + 1 child up to 17 y.

DR cl./double room classic

- double bed, low ground or land side, max. 2 persons

DR co./double room comfort

- double bed, partly 1 chair-bed, partly balcony, sea side, max. 2 persons + 1 child up to 17 y.
- One room are barrier-free.

FR/family room

- bedroom with double bed, bedroom with bunk bed or single bed, max. 2 persons + 1-2 children up to 17 y.

Additional inclusive services – P3

In the event of failure of individual services, replacement will be provided.

- Welcome with mulled wine and biscuits
- New Year's Eve gala buffet
- New Year's Eve party with music and midnight snack
- New Year's breakfast with sparkling wine

Arrival/Departure

- **Arrival:** Monday – Saturday, **Departure:** daily
- **P3** - fixed booking period*

Prices per person – half board

	per period	per overnight
	P3: 26.12.24 – 03.01.25*	01.03.25 – 30.04.25
SR cl.	977 €	67 €
SR co.	1.097 €	76 €
DR cl.	857 €	59 €
DR co.	1.097 € (from 3 pers. 977 €)	76 € (from 3 pers. 71 €)
FR	1.097 € (from 3 pers. 977 €)	76 € (from 3 pers. 71 €)

Extra costs: Tourist tax is charged on site. Use of DR cl./com. as SR: 15 €/night. Use of FR as SR: 20 €/night.



<https://www.bundeswehr-sozialwerk.de/reiseangebot/unterkuenfte/haus-seeburg-und-ferienwohnung-groemitz/>

Haus am Suedstrand • Goehren • Ruegen • Baltic Sea

Thiessower Strasse 18/19, 18586 Goehren/Ruegen, Germany

The house is located on the outskirts of Goehren on the south beach. You can reach the town centre in 5 minutes and the beach promenade on the north beach in 15 minutes on foot.

Facilities

Hotel with 65 rooms, bar, lift, children´s playroom, bowling alley, billiard table, small fitness area, large sun terrace, children´s playground, parking, Wi-Fi in public areas, e-bike charging station

For a fee: washing machine, dryer

Half board with breakfast/dinner buffet

Accommodation

All rooms are equipped with shower, WC, hairdryer and TV.

SR cl./single room classic

- single bed, partly additional 1 baby bed, max. 1 person + 1 child up to 2 y

SR co./single room comfort

- single bed, partly additional 1 baby bed, sea side, max. 1 person + 1 child up to 2 y.

DR cl./double room classic

- double bed, max. 2 persons

DR co./double room comfort

- double bed, partly balcony, sea side, max. 2 persons

FR/family room

- bedroom with double bed and sofa bed or bunk bed, partly additional 1 baby bed, max. 2 persons + 2 children up to 17 y. + 1 child up to 2 y.

Additional inclusive services – P3

In the event of failure of individual services, replacement will be provided.

- Welcome drink
- Slide-show Ruegen 1900
- Folk Choir Selli
- New Year's Eve party with buffet, dance and social programme
- Brunch on New Year's Day
- Barbecue with mulled wine
- Dance evening

Arrival/Departure

- **Arrival:** Monday – Saturday, **Departure:** daily
- **P3** - fixed booking period*

Prices per person – half board

	per period	per overnight
	P3: 26.12.24 – 04.01.25*	15.03.25 – 30.04.25
SR cl.	765 €	61 €
SR co.	824 €	66 €
DR cl.	706 €	56 €
DR co.	824 €	66 €
FR	824 € (from 3 pers. 765 €)	66 € (from 3 pers. 61 €)

Extra costs: Tourist tax is charged on site. Use of DR cl./co. as SR: 15 €/night. Use of FR as SR: 20 €/night.



<https://www.bundeswehr-sozialwerk.de/reiseangebot/unterkuenfte/haus-norderoog/>

Haus am Werlsee • Gruenheide • near Berlin

Walther-Rathenau-Strasse 20, 15537 Gruenheide, Germany

Haus am Werlsee is located directly on the lake on a spacious property. With the regional express from Erkner, you can reach the centre of Berlin within 30 minutes.

Facilities

Hotel with 44 rooms, bar, lift, table tennis, children's corner, sauna, spacious outdoor area, sunbathing lawn, own jetty, playground, parking, Wi-Fi

For a fee: washing machine, dryer

Half board with breakfast/dinner buffet

Free use of bicycles, canoes, rowing boats, pedal boat, stand-up paddle, sauna (within opening hours).

Accommodation

All rooms are equipped with shower, WC, hairdryer, safe, balcony, TV and Wi-Fi.

DR co./double room comfort

- double bed, lake view, balcony, max. 2 persons

JS/junior suite

- combined living room and bedroom with double bed and sofa bed, partly additional 1 baby bed, lake view, balcony, additional bathtub, max. 2 persons + 2 children up to 17 years + 1 child up to 2 years.

FR/family room

- 2 bedrooms with double bed, lake view, balcony, low barrier, max. 4 persons

Additional inclusive services – P3

In the event of failure of individual services, replacement will be provided.

- Welcome drink
- Midnight sparkling wine and snack
- New Year's Eve party with social programme
- Brunch on New Year's Day
- New Year's Day Hike

Arrival/Departure

- **Arrival:** Monday – Saturday, **Departure:** daily
- **P3** - fixed booking period*

Prices per person – half board

	per period	per overnight
	P3: 26.12.24 – 03.01.25*	01.03.25 – 30.04.25
DR co.	752 €	52 €
JS	840 € (from 3 pers. 664 €)	59 € (from 3 pers. 54 €)
FR	752 € (from 3 pers. 664 €)	52 € (from 3 pers. 47 €)
Extra costs: Use of DR co. as SR: 15 €/night. Use of JS/FR as SR: 20 €/night.		



<https://www.bundeswehr-sozialwerk.de/reiseangebot/unterkuenfte/haus-am-werlsee/>

Apartments Maerkische Heide • Gruenheide • near Berlin

Walther-Rathenau-Strasse 20, 15537 Gruenheide, Germany

Apartments Maerkische Heide are located directly on the lake on a spacious property. With the regional express from Erkner, you can reach the centre of Berlin within 30 minutes.

Facilities

1 linen package (bed linen, towels) per person/satay, parking, Wi-Fi

For a fee: washing machine, dryer

Self-catering accommodation (Half board can be booked before arrival - during opening periods Haus am Werlsee)

Accommodation

All apartments have kitchen, bathroom with shower, WC, hairdryer, TV, safe.



Apt. C/apartment C

- 3-room-apartment: 1 bedroom with double bed, 1 bedroom with double bed and 1 single bed, living room, additional 2 baby beds, max. 5 persons + 2 children up to 2 years
- One apartment is provided for taking ONE dog.

Apt. D/apartment D

- 3-room-apartment: 1 bedroom with double bed, 1 bedroom with double bed and 2 single beds, living room, additional 2 baby beds, max. 6 persons + 2 children up to 2 years

Arrival/Departure

- **Arrival:** Monday – Saturday, **Departure:** daily
- **21.12. – 01.01.2025:** daily except Sunday/public holiday, minimum stay: 5 nights

Prices per apartment

	per overnight		
	16.11.2024 – 31.12.2024	01.01.25 – 27.02.25	01.03.25 – 30.04.25
Apt. C	48 €	48 €	64 €
Apt. D	54 €	54 €	72 €
Extra costs: Final cleaning: Apt. C 75 €/stay, bringing a dog 115 €/stay. Apt. D 90 €/stay			



<https://www.bundeswehr-sozialwerk.de/reiseangebot/unterkuenfte/ferienwohnungen-maerkische-heide/>

Hotel Lindenhof • Brauneberg • Moselle

Lindenstrasse 5, 54472 Brauneberg, Germany

Idyllic and quiet in the district of Bernkastel-Wittlich, the Hotel Lindenhof is only a few minutes' walk away from the banks of the Moselle.

Facilities

Hotel with 30 rooms, bar, lift, social/meeting room, terrace, zoo, bowling alley, bicycle and canoe rental, Wi-Fi, e-bike charging station, children's playground, parking

For a fee: infrared cabin, massages can be booked in the house

Half board with breakfast/dinner buffet

Accommodation

All rooms are equipped with shower, WC, hairdryer, TV and Wi-Fi.

SR/single room

- single bed, partly balcony, max. 1 person

DR cl./double room classic

- double bed, balcony, partly additional 1 baby bed, max. 2 persons + 1 child up to 2 yrs.
- One room has a low barrier.

DR co./double room comfort

- double bed, Moselle side, balcony, partly additional 1 baby bed, max. 2 persons + 1 child up to 2 yrs.
- One room has a low barrier.

FR/family room

- bedroom with double bed, separate living room with sofa bed, balcony, partly additional 2 baby beds, max. 2 persons + 2 children up to 17 yrs. + 2 children up to 2 yrs.

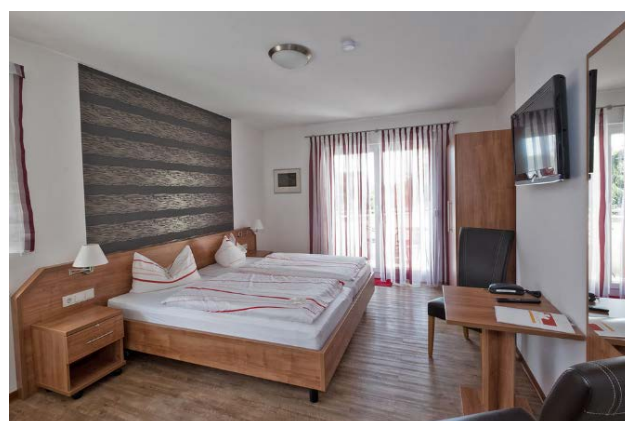
Arrival/Departure

- **Arrival:** Monday – Saturday, **Departure:** daily

Prices per person – half board

	per overnight
	14.04.25 – 30.04.25
SR	55 €
DR cl.	48 €
DR co.	57 €
FR	62 € (from 3 pers. 57 €)

Extra costs: Tourist tax is charged on site. Use of DR cl./co. as SR: 15 €/night. Use of FR as SR: 20 €/night.



<https://www.bundeswehr-sozialwerk.de/reiseangebot/unterkuenfte/hotel-lindenhof/>

Haus Wiesenthal • Oberwiesenthal • Erzgebirge/Ore Mountains

Huettenbachstrasse 1, 09484 Oberwiesenthal, Germany

Haus Wiesenthal is centrally located in a quiet area and is the ideal starting point for cycling, hiking and winter sports. It is only a few minutes' walk from the chairlift, the cable car and the market square.

Facilities

Hotel with 83 rooms, bar, lift, fitness room, 10.000 m² outdoor area, football field, playground, volleyball field, table tennis, children's playroom, youth room, sauna (within opening hours), Wi-Fi in public areas, parking

For a fee: solarium, bowling alley, billiards, washing machine, dryer

Half board with breakfast/dinner buffet

Accommodation

All rooms are equipped with shower or bathtub, WC, hairdryer, TV, safe, Wi-Fi.

SR cl./single room classic

- single bed, max. 1 person

DR cl./double room classic

- double bed, max. 2 persons

DR co./double room comfort

- double bed, partly sofa bed, partly balcony, max. 3 persons

FR/family room

- combined living and bedroom with double bed and 2 single beds, partly additional 1 baby bed, balcony, max. 4 pers. + 1 child up to 2 yrs.

JS/junior suite

- combined living and bedroom with double bed and sofa bed, partly additional 1 baby bed, balcony, low barrier, max. 2 pers. + 2 children up to 17 yrs. + 1 child up to 2 yrs.

SU/suite

- bedroom with double bed and sofa bed or 2 single beds, living room partly with sofa bed, partly additional 2 baby beds, partly balcony, max. 3 persons + 2 children up to 17 yrs. + 2 children up to 2 yrs.
- One room is barrier-free with a disabled-friendly hospital bed.
- bedroom with double bed, bedroom with 2 single beds or sofa bed, partly additional 2 baby beds, max. 4 persons + 1 child up to 17 yrs. or 2 persons + 2 children up to 17 yrs. + 2 children up to 2 yrs.

Additional inclusive services – P2/P3

In the event of failure of individual services, replacement will be provided.

- Welcome drink
- Torchlight hike with mulled wine

Christmas (P2)

- Christmas dinner
- Dance evening

New Year's Eve (P3)

- New Year's Eve buffet with dance evening
- New Year's brunch

Arrival/Departure

- **Arrival:** Monday – Saturday, **Departure:** daily
- **P2/P3** – fixed booking period*

Prices per person – half board

	per period		per overnight
	P2: 21.12.24 – 28.12.24*	P3: 28.12.24 – 04.01.25*	05.01.25 – 29.03.25
SR classic	589 €	707 €	62 €
DR classic	526 €	630 €	55 €
DR comfort	652 € (from 3 pers. 589 €)	784 € (from 3 pers. 707 €)	69 € (from 3 pers. 64 €)
FR	652 € (from 3 pers. 589 €)	784 € (from 3 pers. 707 €)	69 € (from 3 pers. 64 €)
JS	715 € (from 3 pers. 589 €)	861 € (from 3 pers. 707 €)	76 € (from 3 pers. 71 €)
SU	841 € (from 3 pers. 589 €)	1.015 € (from 3 pers. 707 €)	90 € (from 3 pers. 85 €)

Extra costs: Tourist tax is charged on site. Use of DR cl./com. as SR: 15 €/night. Use of FR/JS/SU as SR: 20 €/night.



<https://www.bundeswehr-sozialwerk.de/reiseangebot/unterkuenfte/haus-wiesenthal/>

Hotel Edelweiss • Garmisch-Partenkirchen • Bavaria

Martinswinkelstrasse 15-17, 82467 Garmisch-Partenkirchen, Germany

The comfortably furnished Hotel Edelweiss is quietly yet centrally located in Garmisch-Partenkirchen and is therefore the starting point for numerous hiking tours. In a few minutes' walk you can reach the town centre and the Michael Ende Kurpark.

Facilities

Hotel with 21 individually furnished rooms, bar, bicycle cellar with e-bike charging station, terrace, underground parking, Wi-Fi

The hotel has a lovingly landscaped garden directly on the Partnach river.

For a fee: underground garage 5 €/night (no reservations possible)

Breakfast

Accommodation

All rooms are equipped with shower, WC, hairdryer, TV, safe and Wi-Fi.

DR cl./double room classic

- double bed, partly additional 1 baby bed, partly balcony, max. 2 persons + 1 child up to 2 yrs.
- Two room are provided for taking ONE dog.



DR co./double room comfort

- double bed, partly additional 1 baby bed, balcony, max. 2 persons and 1 child up to 2 yrs.

FR/family room

- 2 bedrooms with double bed, terrace, max. 2 persons + 2 children up to 17 y. The room is provided for taking ONE dog.

JS/junior suite

- combined living and bedroom with double bed, balcony, max. 2 persons
- combined living and bedroom with double bed and sofa bed, partly additional 1 baby bed, balcony, max. 2 persons + 2 children up to 17 yrs. + 1 child up to 2 yrs.

SU/suite

- 2 bedrooms with double bed, living room with sofa bed, additional 1 baby bed, balcony, max. 2 persons + 2 children up to 17 yrs. + 1 child up to 2 yrs.

Arrival/Departure

- **Arrival:** Monday – Saturday, **Departure:** daily
- **on 24.12.2024** and **on 31.12.2024:** no arrival

Prices per persons - breakfast

	per overnight		
	21.12. – 26.12.24	27.12.24 – 04.01.25	05.01.25 – 29.03.25
DR cl.	57 €	64 €	50 €
DR co.	75 €	84 €	66 €
FR	75 € (from 3 pers. 66 €)	84 € (from 3 pers. 79 €)	66 € (from 3 pers. 61 €)
JS	85 € (from 3 pers. 66 €)	94 € (from 3 pers. 89 €)	74 € (from 3 pers. 69 €)
SU	103 € (from 3 pers. 66 €)	115 € (from 3 pers. 110 €)	90 € (from 3 pers. 85 €)

Extra costs: Tourist tax is charged on site (includes free use of local buses). Use of DR cl./co. as SR: 15 €/night. Use of JS/FR/SU as SR: 20 €/night. Surcharge for bringing a dog: 10 €/night.



<https://www.bundeswehr-sozialwerk.de/reiseangebot/unterkuenfte/hotel-edelweiss/>

Hotel Kroessenbacherhof*** • Bruck • Land Salzburg • Austria

Kroessenbachstrasse 12, 5671 Bruck/Grossglockner, Austria

The 4-star hotel is located on the outskirts of Bruck, not far from Zell am See and Kaprun with its Kitzsteinhorn glacier.

Facilities

Hotel with 35 rooms, bar, lift, children's playroom, Xbox room, table tennis room, sauna, lounge room, fireplace lounge, parking, Wi-Fi, e-bike charging station

For a fee: washing machine, dryer

Half board with breakfast buffet and dinner

Accommodation

All rooms are equipped with shower, WC, hairdryer, TV, radio and safe

DR cl./double room classic

- double bed, roof terrace or balcony or loggia, max. 2 persons

DR co./double room comfort

- double bed, partly with sofa bed, balcony or roof terrace, max. 2 persons and 1 child up to 17 yrs.
- Two rooms have low barriers.

FR/family room

- 1 bedroom with double bed, 1 bedroom with 1 bunk bed, balcony, max. 2 persons and 2 children up to 17 y.

JS/junior suite

- combined living and bedroom with double bed and sofa bed, partly additional 1 baby bed, balcony or roof terrace, max. 2 persons and 2 children up to 17 yrs. + 1 child up to 2 yrs.

SU/suite

- living room with sofa bed, 1 bedroom with double bed, 1 bedroom with two single beds, balcony, max. 4 persons and 2 children up to 17 y.

Additional inclusive services – P2/P3

- reflective afternoon with Christmas cookies, mulled wine and punch on 24.12.2024
- festive menu on 25.12.2024
- New Year's celebrations with aperitif reception, 6-course gala menu, 1 glass of sparkling wine/person, midnight buffet

Arrival/Departure

- **Arrival:** Monday – Saturday, **Departure:** daily
- **P2/P3** - fixed booking period*

Prices per person – half board

	per period		per overnight	
	P3 21.12.24 – 28.12.24*	P3 28.12.24 – 04.01.25*	05.01.25 – 29.03.25	30.03.25 – 26.04.25
DR classic	606 €	698 €	68 €	54 €
DR comfort	676 € (from 3 pers. 606 €)	775 € (from 3 pers. 698 €)	75 € (from 3 pers. 70 €)	60 € (from 3 pers. 55 €)
FR	676 € (from 3 pers. 606 €)	775 € (from 3 pers. 698 €)	75 € (from 3 pers. 70 €)	60 € (from 3 pers. 55 €)
JS	746 € (from 3 pers. 606 €)	852 € (from 3 pers. 698 €)	82 € (from 3 pers. 77 €)	66 € (from 3 pers. 61 €)
SU	886 € (from 3 pers. 606 €)	1.006 € (from 3 pers. 698 €)	97 € (from 3 pers. 92 €)	77 € (from 3 pers. 72 €)
Extra costs: Tourist tax is charged on site. Use of DR cl./co. as SR: 15 €/night. Use of FR/JS/SU as SR: 20 €/night.				



<https://www.bundeswehr-sozialwerk.de/reiseangebot/unterkuenfte/kroessenbacherhof/>

Hotel Alpenschloessl • Mayrhofen • Ziller Valley • Austria

Tuxer Strasse 733, 6290 Mayrhofen, Austria

The Hotel Alpenschloessl is quietly but centrally located in Mayrhofen. The ski bus stop, Ahornbahn, Penkenbahn, restaurants, cafés and pubs are only a few minutes' walk away.

Facilities

Hotel with 21 rooms, bar, terrace, lift, wellness area incl. sauna and relax room (use within opening hours), parking, Wi-Fi, e-bike charging station

Breakfast

Accommodation

All rooms are equipped with shower, WC, hairdryer, TV, radio and Wi-Fi.

SR/single room classic

- single bed, max. 1 person

DR cl./double room classic

- double bed, partly balcony, max. 2 persons

DR co./double room comfort

- double bed, partly additional 1 single bed, partly additional 1 baby bed, balcony or terrace, max. 2 persons + 1 child up to 17 yrs. + 1 child up to 2 yrs.

FR/family room

- 2 bedrooms with double bed, additional 1 sofa bed, max. 4 persons + 1 child up to 17 yrs.
- 1 bedroom with double bed, 1 bedroom with bunk bed, partly balcony, max. 4 persons

JS/junior suite

- combined living and bedroom with double bed and sofa bed, partly addition 1 single bed, balcony or terrace, max. 4 persons + 1 child up to 17 yrs.

SU/suite

- 1 bedroom with double bed, living room with sofa bed, balcony, max. 4 persons

Arrival/Departure

- **Arrival:** Monday – Saturday, **Departure:** daily
- **27.12.2024 – 04.01.2025:** fixed booking period*

Prices per persons – breakfast

	per overnight		
	27.12.24 – 04.01.25*	05.01.25 – 29.03.25	30.03.25 – 13.04.25
SR classic	87 €	59 €	53 €
DR classic	74 €	51 €	46 €
DR comfort	99 €	67 €	61 €
FR	99 € (from 3 pers. 94 €)	67 € (from 3 pers. 62 €)	61 € (from 3 pers. 56 €)
JS	112 € (from 3 pers. 107 €)	76 € (from 3 pers. 71 €)	68 € (from 3 pers. 63 €)
SU	137 € (from 3 pers. 132 €)	92 € (from 3 pers. 87 €)	83 € (from 3 pers. 78 €)

Extra costs: Tourist tax is charged on site. Use of DR cl./co. as SR: 15 €/night. Use of FR/JS/SU as SR: 20 €/night.



<https://www.bundeswehr-sozialwerk.de/reiseangebot/unterkuenfte/hotel-alpenschloessl-und-ferienwohnung-mayrhofen/>

Hotel 360 Grad • Merano • South Tyrol • Italy

Dantestrasse 110, 39019 Merano, Italy

The hotel is situated in a picturesque, quiet location on the outskirts of Merano and not far from Trauttmansdorff Castle. The unspoilt location offers a fantastic panoramic view of the Merano countryside. A bus stop is located in the immediate vicinity.

Facilities

Hotel with 35 accommodation units, bar, roof terrace with panoramic view, outdoor brine pool, library, billiard room, trampoline, table tennis and nest swing, parking, Wi-Fi. Indoor and outdoor towels are provided at no additional cost.

For a fee: bathrobes on loan, underground garage 5 €/night

Half board with breakfast buffet and dinner

Accommodation

All rooms are equipped with shower or bathtub, WC, hairdryer, TV, minibar, safe and Wi-Fi

SR cl./single room comfort

- single bed, balcony, max. 1 person

DR co./double room comfort

- double bed, partly additional 1 baby bed, partly balcony or terrace, max. 2 persons + 1 child up to 2 yrs.

FR/family room

- combined living and bedroom with double bed and sofa bed, partly additional 2 baby beds, balcony, max. 4 persons + 2 children up to 2 yrs.

JS/junior suite

- double bed, partly additional 2 baby beds, balcony, max. 2 persons + 2 children up to 2 yrs.
- combined living and bedroom with double bed and sofa bed, partly additional 1 baby bed, balcony, low barrier, max. 4 persons + 1 child up to 2 yrs.

SU/suite

- 1 bedroom with double bed, 1 living room with sofa bed or partly with 2 sofa beds, partly additional 2 baby beds, partly low barrier, balcony, bathroom with shower and/or bathtub, max. 4 persons + 1 child up to 17 yrs. + 1 child up to 2 yrs.

Arrival/Departure

- **Arrival:** Monday – Saturday, **Departure:** daily

Price per person – half board

	per overnight
	15.03.25 – 30.04.25
SR co.	71 €
DR co.	79 €
FR	79 € (from 3 pers. 74 €)
JS	86 € (from 3 pers. 81 €)
SU	102 € (from 3 pers. 97 €)

Extra costs: Tourist tax is charged on site. Use of DR co. as SR: 15 €/night. Use of FR/JS/SU as SR: 20 €/night.



<https://www.bundeswehr-sozialwerk.de/reiseangebot/unterkuenfte/360-grad-und-ferienwohnungen-meran/>

Piccola Italia Resort • Tremosine • Lake Garda • Italy

Via Mezzema 1, 25010 Tremosine sul Garda, Italy

The Piccola Italia Resort is located in the middle of the fantastically beautiful Alto Garda Nature Park, with its mountains and plateaus above the western side of Lake Garda. The municipality of Tremosine nestles in the mountains at an altitude of up to 800 metres. Restaurants, bars, shops can be found in the idyllic mountain village of Pieve, 500 metres away. Lake Garda is 6 km away and the beach is 15 km away.

Facilities

Terraced resort with 35 accommodation units, lift, outdoor pool, terrace with sun loungers and parasols, children's pool, table tennis, parking, Wi-Fi, e-bike charging station and outdoor fitness equipment

For a fee: linen package 11 €/person/stay

Self-catering accommodation (no meals)



Accommodation

All apartments/bungalows have bathroom with shower or bathtub, WC, hairdryer, kitchenette, balcony or terrace, lake view, TV, telephone, safe, fan, heating, Wi-Fi.

Apt. B/apartment B

- 2-room-apartment: 1 bedroom with double bed, 1 living room, additional 1 baby bed, balcony, max. 2 persons + 1 child up to 2 yrs.
- Two apartments are provided for taking ONE dog.

Apt. C/apartment C

- 2-room-apartment: 1 bedroom with double bed and whirlpool, 1 living room with sofa bed, additional 2 baby beds, balcony, max. 4 persons + 2 children up to 2 yrs.

Apt. D/apartment D

- 3-room-apartment: 2 bedrooms with double bed, 1 living room with sofa bed, additional 2 baby beds, balcony, max. 6 persons + 2 children up to 2 yrs.

BU/bungalow

- 3-room-bungalow: 2 bedrooms with double bed, 1 living room, additional 2 baby beds, terrace, max. 4 persons + 2 children up to 2 yrs.
- Two bungalow have low barriers.
- Two bungalows are provided for taking ONE dog.

Arrival/Departure

- **Arrival:** Monday – Saturday, **Departure:** daily

Prices per apartment or bungalow

	per overnight
	05.04.25 – 30.04.25
Apt. B	66 €
Apt. C	91 €
Apt. D	97 €
BU	85 €

Extra costs: Tourist tax is charged on site. Final cleaning: Apt. B 65 €/stay, Apt. C + Bungalows 90 €/stay, Apt. D 90 €/stay. Surcharge for bringing a dog: 40 €/stay



<https://www.bundeswehr-sozialwerk.de/reiseangebot/unterkuenfte/piccola-italia-resort>



Bundeswehr Sozialwerk
Hilfe und Erholung